

**revolution**



cutting edge gear

# Setup Guide



# Kuro Box

# revolution



cutting edge gear

## How to Use This Guide

Kuro Box offers a vast number of solutions. How you choose to use your Kuro Box is determined by yourself. We provide a fairly full solution offering the typical NAS solutions such as Samba, FTP and netatalk that can be expanded by loading new modules just as you would on a full sized Linux computer.

You also have the option of disregarding the image we provide on the setup CD and build your own complete custom solution as well.

Whichever path you choose, please follow the Drive Installation portion of this guide very carefully, and please for your own safety, pay close attention to the safety warnings provided

Anytime an electronic device is opened and the internals are exposed, even for a quick drive installation, precautions should be taken to minimize the risk of harm to yourself or the device, and to maximize the lifespan of your purchase.

To get started, provide a clutter-free, well-lit area to work in and review the safety procedures and preparation steps on the next page. The only tools that you will need are a small flathead screwdriver and a Phillips head screwdriver. Take care to save the small screws as you remove them.



## Safety Guidelines

One of the best features of the Kuro Box is the ability to introduce a drive as small or large as the solution calls for. However, this requires that the chassis be opened, introducing hazards to yourself and the hardware that must be heeded. Following the setup process carefully and noting specific areas at which to pay specific attention, both you and your Kuro Box will enjoy many years of operation. If care is not taken, you are risking not only damage to the sensitive electronic components, but also bodily harm to yourself. To begin with, a few best practices for safety:

1. Never open the Kuro Box chassis while it is plugged into and electrical power source.
2. Never touch the power supply. It can hold a charge for quite some time after use, and should be considered very dangerous even when not plugged into an electrical power source.
3. Work in a clean, well-lit workspace.
4. Do not leave any tools or screws loose inside the chassis. These can cause shorts and introduce a fire risk.
5. All parts that are removed during installation should be affixed back in to the chassis properly with screws.
6. Allow the device to cool after usage if the chassis needs to be removed. The silicon will heat up and can cause skin burns if touched even for a moment.
7. Work at a careful pace.



## Disassembling the Kuro Box

The disassembly, installation of a hard drive and reassembly of your Kuro Box will take about 15 minutes. Please set aside ample time to complete the procedure without interruption to prevent having to leave the unit in a disassembled position, leaving internal parts exposed and creating an opportunity for parts to be lost.

After reviewing the Safety Guidelines, remove the items from your package and acquire a small Phillips head screwdriver and a small flathead screwdriver or similar small pointed device.



- A. Kuro Box Chassis
- B. Base Plate
- C. Hard Drive Screws
- D. Setup CD-ROM

# revolution



cutting edge gear

## Removing the Face Plate

Beginning with the top of the Kuro Box, locate the small button exposed between the gray face plate and black body. Using your flathead screwdriver, gently press in the button, and use your finger to gently slide the faceplate forward pulling from the rear to the front. The device should



In the same manner, click the small button on the bottom of the device and gently slide the face plate forward. The entire faceplate can now be removed in put to the side until the last step of reassembly.



## Opening the Chassis

Removing the face plate will reveal two locking tabs on the bottom and top of the device. Starting at the base, firmly press in the tabs with two fingers, then gently pull the device open until the chassis partially opens.



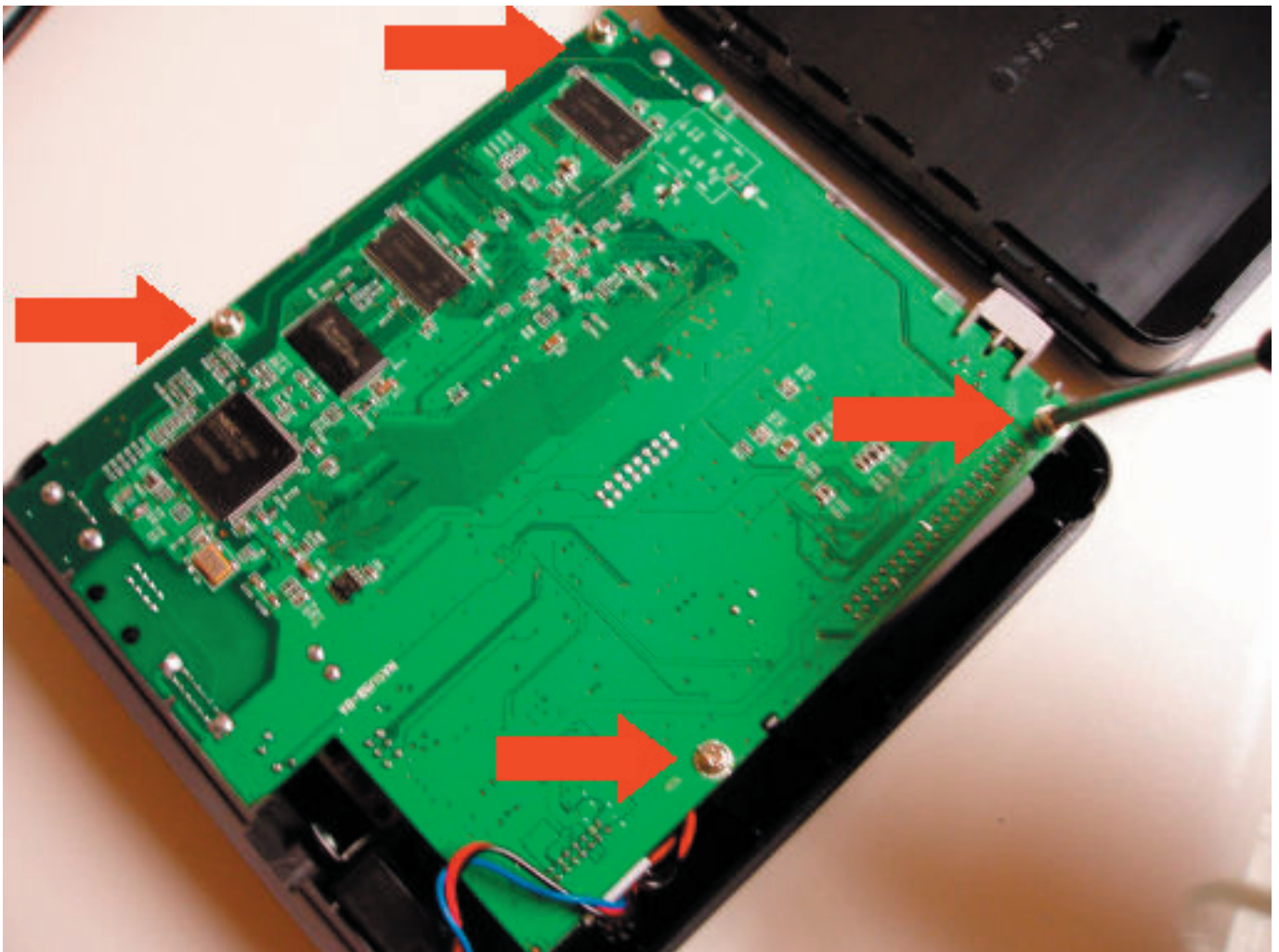
Repeat this on the top part of the Kuro Box and the chassis can then be gently opened, exposing the base of the system board. The removed section of the chassis can then be moved out of the way and used to hold the screws that will be removed in the next step.

Should the clear plastic four-prong piece come loose, simply set it aside to be replaced near the end of reassembly.



## Removing the System Board

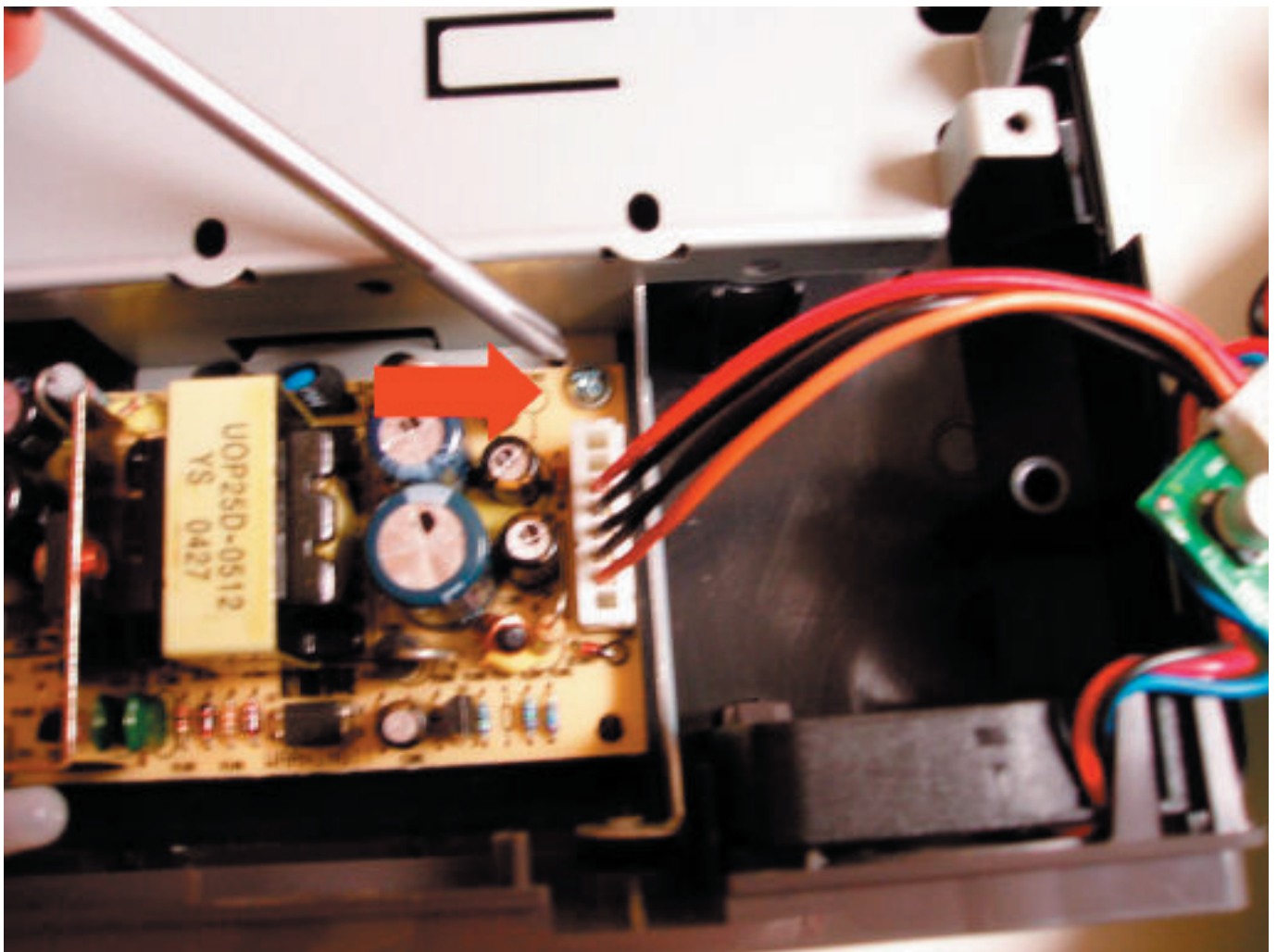
Remove all 4 screws from the bottom of the system board and set them aside for later. Be sure not to exert force onto the screws, as damage to the system board can occur, which could lead to a hardware failure.





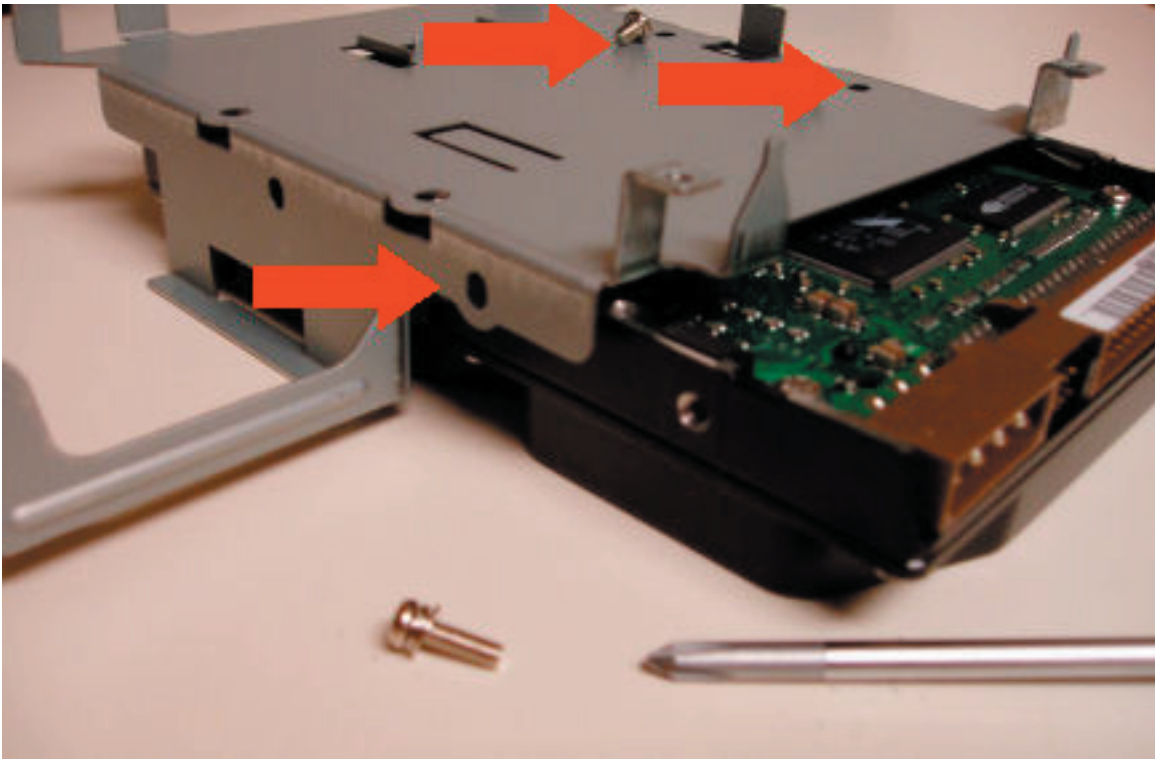
## Detaching the PS

A single screw hold the power supply in place. After removing this screw, gently lift the power supply from its position, noting how it was resting on the arm of the hard drive chassis and the pegs coming off of the wall of the chassis. This is important for proper reassembly later on.





## Attaching the Hard Drive



Three screws are included with your package. Use at least one on the side of the hard drive carriage and one on the top. The holes for the screws should be aligned to the holes on the hard drive.

At this point, make sure that your hard drive has been jumpered as a Master device. If unsure of the process, check the documentation that came with your hard drive.

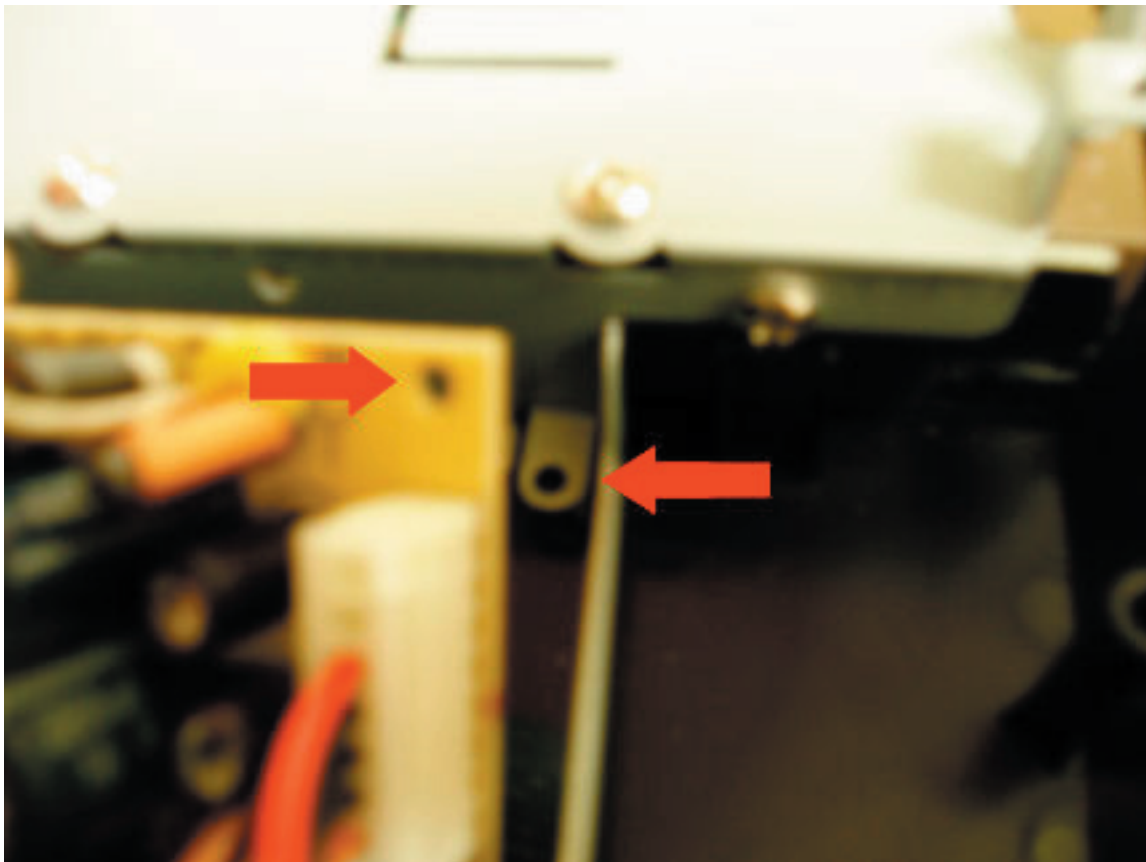
# revolution



cutting edge gear

## Reinstalling the PS

Place the hard drive carriage back into the chassis by sliding the carriage arm in the slot just underneath the fan snugly. Taking note of the screwhole on the hard drive carriage, align the power supply screwhole with the carriage screwhole. Also, align the other end of the power supply with the black plastic peg coming off of the chassis body. Firmly screw the power supply back in, once properly aligned.



# revolution



cutting edge gear

## Checking the Power Cord

Take a moment at this point to verify that the power cord is securely in place near the bottom of the rear panel. Should it be detached or out of place adjust its position properly before proceeding.



Also, verify that the connector of the cord is snugly in place on the power supply itself.

# revolution



cutting edge gear

## Positioning the System Board

Line up the system board at angle to bring the USB and Ethernet ports through the rear plate of the chassis. The board should then be able to lay comfortable above the screwholes on its platform. Do not insert the screws until completing the next two steps.

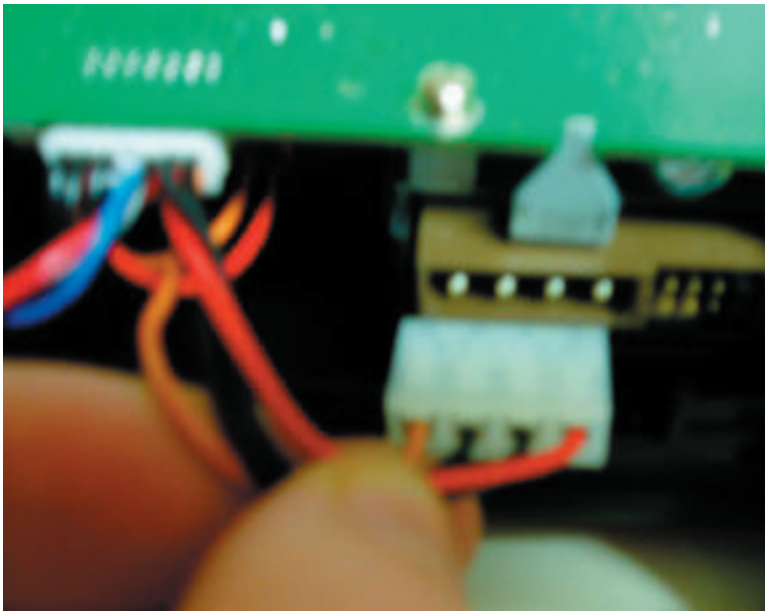


# revolution



cutting edge gear

## Connecting the Drive



Firmly plug in the power cord from the system board to the Hard Drive.

Then, firmly attach the IDE cable to the hard drive.

Check to make sure that all cables are safely tucked into the chassis.



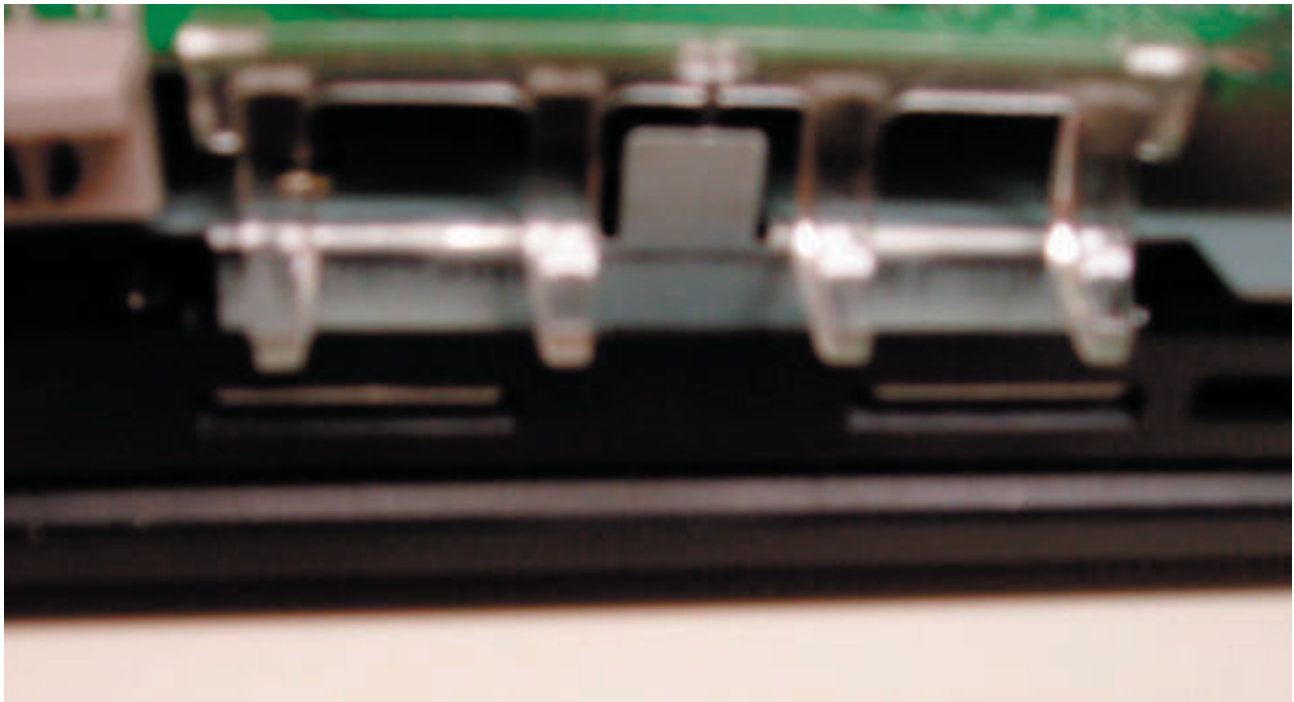
# revolution



cutting edge gear

## Checking the LED Lights

If during disassembly, the clear plastic piece which directs the LED lights to display on the front of the chassis unclipped, reattach it prior to replacing the four screws into the system board. The front of the unit should appear as shown below before replacing the shell of the Kuro Box.



Note that the LED display piece curves outward after it clips onto the system board. The board can be reattached with the 4 screws at this point.

# revolution



cutting edge gear

## Closing the Kuro Box

Verifying one last time that all cables are snugly within the chassis and that everything has been properly screwed back into place, carefully position the other part of the chassis shell over the front side of the Kuro Box.



Lining up the top and bottom clips and the rear panel with the internal rails of the chassis will allow the device to cleanly snap back together. Just before closing, make sure that no cables are protruding and that the power button and LED display lights are exposed on the front side.

# revolution



cutting edge gear

## Reattaching the Front Panel

Lining up the small guides inside the panel piece, gently slide first the top, then the bottom pieces into the rails on the top and bottom of the Kuro Box. Gently pressing backwards from the front of the panel should lock it firmly into place.



The base panel can then be slid onto the bottom of the Kuro Box. The blue protective film can be peeled from the front of the display as well.

You can now proceed to initializing your drive and start using your Kuro Box.



## Attaching and Powering Up

Once equipped with a hard drive, the final steps of setting up Kuro Box are simple. Simply attached the device to your network via its rear Ethernet port and boot up via the power button on the front of the device.

By default, Kuro Box will seek IP Addressing via DHCP. Should DHCP not be available on your network, Kuro Box will assign itself and IP Address of 192.168.11.150 with a Subnet Mask of 255.255.255.0.

Insert the Setup CD and launch the Kuro Box Setup utility. Note that this utility will repartition, reformat and load its firmware to the device. For this reason, please make sure you have archived your data if the drive you installed is not a brand new hard drive.

When the process has completed, Kuro-Box can be configured either by command line via a telnet shell session or via Web by simply typing kuro-box into your browser address bar. In both cases, root access is acquired via the user name "root" and the password "kuro" for telnet sessions or user name "root" with a blank password for configuration via the web browser interface. The first step of configuration should always be changing your password to preserve security.

Go to [www.revogear.com](http://www.revogear.com) to get the latest updates and advice.